



SUMMIT COUNTY 4-H
970-668-4142
fax 970-668-2983
Post Office Box 5660
37 Peak One Drive CR 1005
Frisco, Colorado 80443
www.extension.colostate.edu/summit/4hy.shtml

WELCOME TO SUMMIT COUNTY 4-H !

Summit County 4-H Enrollment Fee is \$40.00/child, October 1, 2010–September 30, 2011

The 4-H Youth Development Program is a growing, changing and evolving organization of youth, volunteers and salaried staff who work together to provide a safe environment where Colorado 4-H youth develop life skills. The 4-H Youth Development program is unique from other youth organizations through its relationship with the United States Department of Agriculture (USDA); Colorado State University (CSU), the state's land-grant university; Extension, and Summit County Government. With public, corporate and private-sector funding, the programs are research-based, age-appropriate, and designed for experiential learning. 4-H Youth Development programs are open to all economic, social & cultural groups, for youth ages 5-18 (as of January 1, 2011).

(Youth must be at least 8 years of age to participate in 4-H horse & shooting sports clubs.)

THE 4-H's

Head—clearer thinking and decision making. Knowledge useful throughout life.

Heart—greater loyalty, strong personal values, positive self-concept, concern for others.

Hands—larger service, community service, workforce preparedness, useful skills.

Health—better living, healthy lifestyles.

THE 4-H VALUE SET

We believe that youth development is the focus of everything we do.

We believe youth/adult partnerships are essential to successful youth development.

We believe that volunteerism is fundamental.

We believe in the strength attained from diversity across the entire range of 4-H experiences.

THE 4-H PROJECT CLUB

Summit County 4-H currently offers over 26 different project clubs including arts & crafts, horses, rocketry, cake decorating, ceramics, sewing, fly fishing, archery, leathercraft, dog training, woodworking, and more. All 4-H clubs have a 4-H adult volunteer leader who specializes in that project, and enjoys working with youth. In these 4-H project clubs, youth members learn life-skills while learning the hands-on skill of the project. 4-H project clubs meet throughout the year, while focusing on setting goals and completing their 4-H project and record books for the Annual 4-H Exhibit Days, 4-H Horse Show, and 4-H Dog Show in July. The 4-H Exhibit Days & Shows provide an opportunity for the 4-H members to receive recognition and feedback on their 4-H project work.

4-H ENROLLMENT

Summit County 4-H enrollment period starts every October 1, and all new and returning 4-H members must enroll each year. A current \$40 4-H enrollment fee helps pay for club supplies, insurance, State 4-H fees, leader recognition, & awards. Scholarships are available if needed.

4-H Enrollment Forms and more information about Summit County 4-H is available on our web site at

www.extension.colostate.edu/summit/4hy.shtml Call 668-4142 or email kkralik@co.summit.co.us

Thank you and welcome to Summit County 4-H!

Kathie M. Kralik

Summit County 4-H Youth Development Manager



Extension

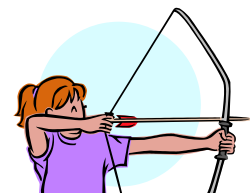
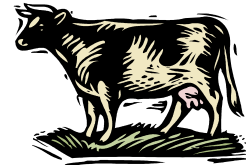
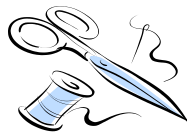
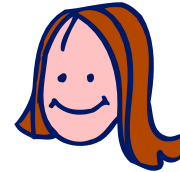
SUMMIT COUNTY 4-H
970-668-4142
fax 970-668-2983
Post Office Box 5660
37 Peak One Drive CR 1005
Frisco, Colorado 80443

www.extension.colostate.edu/summit/4hy.shtml

kkralik@co.summit.co.us



**HEY KIDS,
JOIN 4-H FOR \$40!**



Summit County 4-H offers life-skill development for kids ages 5-18 through our 4-H clubs in Ceramics, Gardening, Fly Fishing, Dog Training, Cake Decorating, LeatherCraft, Fun with Foods, Rocketry, Biking, Woodworking, Horses, Hiking, Arts & Crafts, Archery, Sewing, and much more!

Your Extension Office is jointly funded by Summit County Government and Colorado State University.

Extension programs are available to all without discrimination.