

# Silvana's Community Gardens

*~ where columbines, carrots & community  
grow together*

**Silvana's Community Gardens** invites individuals and families from all backgrounds who choose to grow together. This working garden welcomes all members of the community regardless of gardening experience. Through hands-on development the gardens integrate education, creative expression, cooperation and community spirit. Please take an application and return it to the Silverthorne Town Hall. Please email [info@silvanascommunitygardens.org](mailto:info@silvanascommunitygardens.org) if you have any questions.

**Club de Jardinería Comunitario Silvana** invita a individuos y a familiares con cualquier tipo de formación e interés en el cultivo. Este grupo de jardinería desea invitar a todos los miembros de la comunidad a pesar de que no cuenten con ningún tipo de experiencia. Podrán participar, desarrollar una educación integrada, expresarse creativamente, al igual gozarán de un espíritu comunitario y de cooperación. Favor tome una aplicación y devuelvala al "Silverthorne Town Hall". Si tiene preguntas manden e-mail al [info@silvanascommunitygardens.org](mailto:info@silvanascommunitygardens.org).

## **GARDENING GUIDE**



## An Overview

Silvana's Community Garden was created in memory of the late Silvana Del Piccolo. Of the many things for which she had a passion, gardening was one of them.

There are many and far-reaching goals

- classes which encourage individuals, children and families to learn to grow their own healthy food for a lifetime*
- to provide a means for them to appreciate, preserve and improve our local environment*
- to sharing ideas about gardening, sustainable living and healthy nutrition*
- to grow a community, overcoming all language-based and other barriers in Summit County with the common goal of gardening.*

In April 2007, the concept of a Community Garden was first proposed by Silverthorne's Economic Development Advisory Committee's (EDAC) WOW Sub-Committee and EDAC members Larry Lunceford, Eddie O'Brien, and Marc Hogan. Town Council favored the idea based on the establishment of community leadership, administration, private funding, and that an appropriate site plan could all be established, then the garden concept should be given consideration through the Town's site plan process. Today planning and planting are underway to bring to those goals to fruition.

The garden site is the grassy area at the southeast corner of Rainbow Drive and E. Fourth St., across from the Silverthorne Recreation Center. We've broken ground – setting up temporary beds of daffodils ready to explode with yellows and whites in a month. There will be 25 beds in use by June 15th, 2009.

The entire scope of our work is to create an eternal source for the community to cultivate and communicate. The garden will serve as a place for serious gardeners and novices to get their hands dirty and benefit from their neighbor's expertise. The result will attract, among others: children's organizations, ecologically minded gardeners, and those seeking additional space they might not otherwise be afforded through their current lease or land holdings.

We place a high value on sustainable landscaping and the goodwill of our users to maintain their plots. However, we believe the overall benefit lies in community we will create. Those who invest themselves in the project can't help but visit the site often to reap the rewards of growth (no matter how initial).

The site of a ¼ inch sprout from a seed is so exciting, it beckons a return call the following day, and there on.

The first gatherings of the garden in May of salads, radishes and herbs made me feel like a mother about her baby –

how could anything so beautiful be mine.

And this emotion of wonder filled me for each vegetable as it was gathered every year.

There is nothing that is comparable to it, as satisfactory or as thrilling, as gathering the vegetables one has grown.

Alice B. Toklas

## **Silvana's Community Gardens Contacts**

<u>Name</u>	<u>Title</u>	<u>email</u>
Maggie Butler	Fundraising/Outreach	<a href="mailto:mbutler@summitdaily.com">mbutler@summitdaily.com</a>
Linda Hrycaj	Co-Chair	<a href="mailto:hrycaj@yahoo.com">hrycaj@yahoo.com</a>
Susan O'Brien	Secretary	<a href="mailto:susobn@yahoo.com">susobn@yahoo.com</a>
Marie Orlin	Co-Chair	<a href="mailto:morlin@brecknet.com">morlin@brecknet.com</a>
Chad Noble	Construction Coordinator	<a href="mailto:heynobes@yahoo.com">heynobes@yahoo.com</a>
Joanna Rybak	Education Coordinator	<a href="mailto:joanna@summitpreventionalliance.org">joanna@summitpreventionalliance.org</a>
Heather Gerhart	Volunteer Coordinator	<a href="mailto:mountaingal.hg@gmail.com">mountaingal.hg@gmail.com</a>

**SILVANA'S COMMUNITY GARDENS**  
**Rules and Operating Procedures**

**ALLOCATION OF PLOTS**

1. Plots will be allocated on a first come-first served basis. Applications for reserving a plot are available online at "<http://www.silvanascommunitygardens.org/>" or may be picked up at the Silverthorne Town Hall.
2. Submit a signed application, along with signed release and fee to the Garden Registrar at the Silverthorne Town Hall. The deadline for submitting an application is the second Friday in March. After all plots have been reserved, applicants will be waitlisted.
3. Rent on each plot will be: Small Bed - \$20.00 + \$20.00 Deposit  
Larger Bed - \$30.00 + \$30.00 Deposit  
Deposits will be returned when the plot is left clean by November 1<sup>st</sup> as determined by the garden committee.
4. Repeat gardeners may request the same plot year to year. Make a request to the Registrar by Sept. 30.

**GARDENER'S RESPONSIBILITIES**

1. Throughout the season there will be mandatory work days scheduled as needed. All gardeners are expected to participate in at least 1 of the workdays per year. Check the website or the bulletin board at the gardens for information on dates.
2. Occasionally operational, informational and social events will be planned. Everyone is encouraged to attend and get involved.
3. It is the responsibility of all gardeners to maintain the common space. Weeding, mulching and trash removal will be a community responsibility.

**PLOT MANAGEMENT AND GENERAL GUIDELINES**

1. Plots must be planted by June 30 (weather permitting). Unless prior arrangements have been made with the Registrar, any unplanted plots will be re-assigned to the next gardener on the waiting list and the deposit forfeited.
2. Pesticides or herbicides may not be used. Please refer to the information packet for a list of products and techniques acceptable for weed and pest control.
3. Children are welcome in the garden. They must be supervised at all times by an adult. Children will need to understand the general rules of the garden and have respect for the boundaries between plots and the property of others.
4. Garden debris and trash must be removed from the garden area by gardeners.

5. Pets are not allowed in the gardens.
6. Any illegal activity or use of alcohol and/or tobacco is prohibited.
7. All plots are to be kept free of weeds, harmful insects and debris.
8. Plants should not encroach into neighboring plots or pathways.
9. Gardeners may not weed, inspect or harvest from any plot that is not their own.
10. Be water wise. Roll up hoses and make sure water is turned off after use.
11. Please consult the information packet for acceptable mulching materials and soil amendments.

Failure to comply with the above procedures may result in the plot being reassigned. One warning will be given by the garden committee. If the problem has not been satisfactorily addressed within two weeks, the plot will be re-assigned to the next gardener on the waiting list. The committee is the final authority in all disputes.

I have read and agree to comply with the above Rules and Regulations.

Signed: \_\_\_\_\_ Date: \_\_\_\_\_

Printed Signature: \_\_\_\_\_

SUMMIT COUNTY PLANTING GUIDE

3/18/2009

Vegetables/Greens	Degree of Difficulty	Planting Method	Notes
Arugula	easy	direct seed	
Broccoli Raab	easy	direct seed	
Broccoli	easy	transplant	
Carrots	easy	direct seed	
Cauliflower	easy	transplant	
Chinese Cabbage	easy	direct seed	
Collards	easy	direct seed	
Kale	easy	transplant or direct seed	
Kohlrabi	easy	transplant or direct seed	
Lettuce	easy	transplant or direct seed	
Onion	easy	transplant	
Onion bunching	easy	direct seed	
Parsnip	easy	direct seed	
Peas, Snow	easy	direct seed	
Peas, Sugar Snaps	easy	direct seed	
Potatoes	easy	plant in tires or small area, very productive	
Radish	easy	direct seed	
Radicchio	easy	direct seed	
Spinach	easy	direct seed	
Swiss Chard	easy	direct seed	
Turnips	easy	direct seed	
<b>Herbs</b>			
Chives	easy	transplant or direct seed	
Cilantro	easy	transplant or direct seed	
Dill	easy	transplant or direct seed	
Garlic	easy	transplant or direct seed	
Lavender	easy	transplant or direct seed	
Lemon Thyme	easy	transplant	
Mint	easy	transplant or direct seed	very invasive if not contained
Oregano	easy	transplant or direct seed	
Parsley	easy	transplant or direct seed	
Sage	easy	transplant or direct seed	
Tarragon	easy	transplant or direct seed	
Thyme	easy	transplant or direct seed	

5

### **SOIL AMENDMENTS**

Most mountain soils lack enough organic matter to provide nitrogen to growing plants. Compost is what is added to soil. There are many types. Mix into top 6-8" of soil. Mulch can be used on top of the soil to maintain moisture and prevent weeds from growing. Humus is the remains of organic matter after the early decomposition and improves soil by improving water retention. You can use soil testers to determine make up of the soil.

### **PLANTING SEEDS AND TRANSPLANTS:**

Quilt gardening: broadcast your seeds

Three Sisters Gardening: Planting seeds that grow close together and help each other

Stagger your plants: Plant small amounts each 10 days or so until August 1 to extend your harvest

Condition of Soil when planting: well tilled with amendments

Planting depth: plant small seeds shallow, larger seeds deeper

### **CARE OF GARDEN AFTER PLANTING:**

Thinning: save you seeds and plant only what you need. Thin by hand as needed.

Hand weed, or use small hoe

Water by hand, gentle stream

### **SUGGESTED TOOLS:**

Small shovel

Hand Trowel

Garden Gloves

Weed rake

GardenNotes #713

# Block Style Layout in Raised Bed Vegetable Gardens

Outline: Block style garden layout, page 1  
Suggested spacing, page 2  
Raised bed gardens, page 4  
Construction of a raised bed garden, page 5  
Gardening with raised beds, page 7  
Additional information, page 8

## Block Style Garden Layout

**Block** style garden layout (also called *close-row* or *wide-row* plantings) increase yields five fold compared to the traditional row-style garden layout, 15 fold for the smaller kitchen garden vegetables. The compact design reduces weeding and is ideal for raised bed gardening.

The basic technique used in close-row, block plantings is to eliminate unnecessary walkways by planting vegetables in rectangular-shaped beds or blocks instead of long single rows. For example, plant a block of carrots next to a block of beets, followed with a block of lettuce and so forth down the bed area.

Plant crops with an equal-distance spacing between neighboring plants in both directions. For example, space a carrot patch on 3 inch by 3-inch centers. It may be easier to visualize this plant layout as running rows spaced 3 inches apart across the bed, and thinning the carrots within the row to 3 inches. A 24-foot long "traditional" row of carrots will fit into a 3 foot by 2-foot bed. [Figure 1]

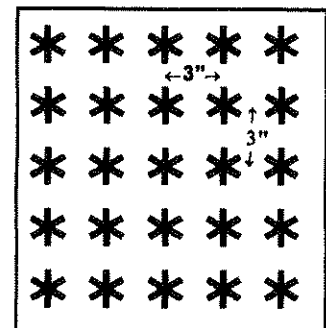


Figure 1. Carrots planted on 3-inch centers

Design the planting beds to be 3 to 4 feet wide and any desired length. This width makes it easy to reach into the growing bed from walkways for planting, weeding and harvesting.

Limiting foot traffic to the established walkways between planting beds reduces soil compaction. Design walkways to 18-24 inches wide. Mulch walkways with dry grass clippings, wood chips, or other organic mulch.

As the vegetable foliage grows together, the shade cast suppresses weed germination.

After harvesting a row of radishes, beets, lettuce, or spinach, replant for continual summer production.

**Due to the higher plant density, block plantings require a weed-free, fertile, well-drained soil that is rich in organic matter.** Give extra attention to watering and light, frequent fertilization to nourish the dense plant population. Avoid over-crowding vegetables; the reduced air circulation can increase disease problems.

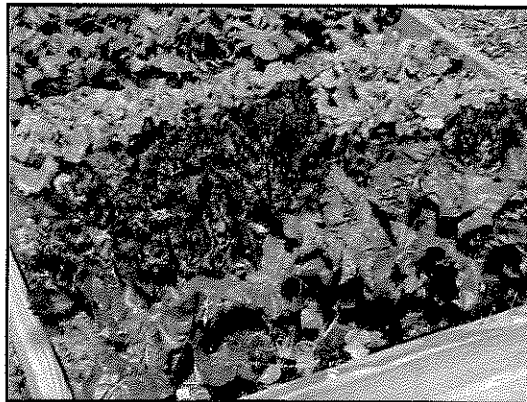


Figure 2. Kitchen garden in block-style layout with (top to bottom) spinach, assorted lettuce varieties) and Swiss chard. Note that rows run across the four-foot wide bed. As a row of lettuce is harvested, it is replanted for continual production or neighboring crops fills in the space.

### Suggested Spacing

**Suggested spacing for kitchen garden vegetables:** (Start with the wider spacings, reducing spacing with experience and as soil improves in fertility and tilth.)

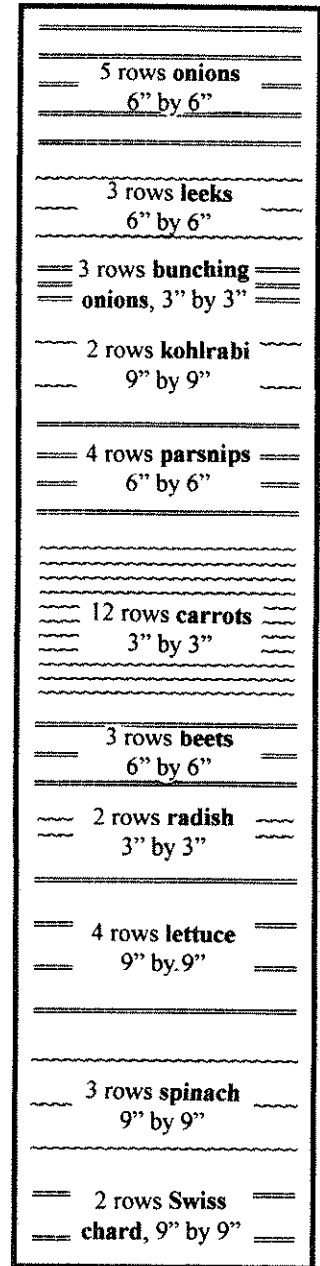


Figure 3. Sample kitchen garden

Beets: 4-6" by 4-6"  
 Carrots: 2-3" by 2-3"  
 Celery: 7-9" by 7-9"  
 Garlic: 4-6" by 4-6"  
 Kohlrabi: 7-9" by 7-9"  
 Leeks: 4-6" by 4-6"  
 Lettuce, head: 10-12" by 10-12"  
 Lettuce, leaf: 7-9" by 7-9"  
 Onions, bunching: 2-3" by 2-3"  
 Onions, dry: 4-6" by 4-6"  
 Parsnips: 5-6" by 5-6"  
 Radishes: 2-3" by 2-3"  
 Spinach: 4-6" by 4-6"  
 Swiss chard: 7-9" by 7-9"  
 Turnips: 4-6" by 4-6"

**Other vegetables suited to block planting**

**Cole crops** (broccoli, cabbage, Brussels sprouts and cauliflower) – Spaced at 18" by 18", or three plants across a four-foot bed.

**Corn** – Always plant in a block to facilitate pollination. Five rows wide is recommended for the best "pollen shower" to maximize kernel set; three rows wide is minimum. Space at 12" by 30" or four rows across two, four-foot wide beds.

**Eggplant** – Space at 18-24" by 18-24" (or two or three plants across a four-foot wide bed).

**Peppers** – Space at 15" by 15" (or three plants across a four-foot wide bed).

**Potatoes** – Space at 12-15" by 12-15" (or three plants across a four-foot wide box).

**Vine Crops** (squash, cantaloupes, pumpkins, and watermelons) – Place a single row down the center of a four-foot wide box. They may also be planted in larger blocks, several rows wide. Place the winter squash and pumpkins in the center of the block and cantaloupes, watermelons, and summer squash around the edge where they can be reached for summer harvest.

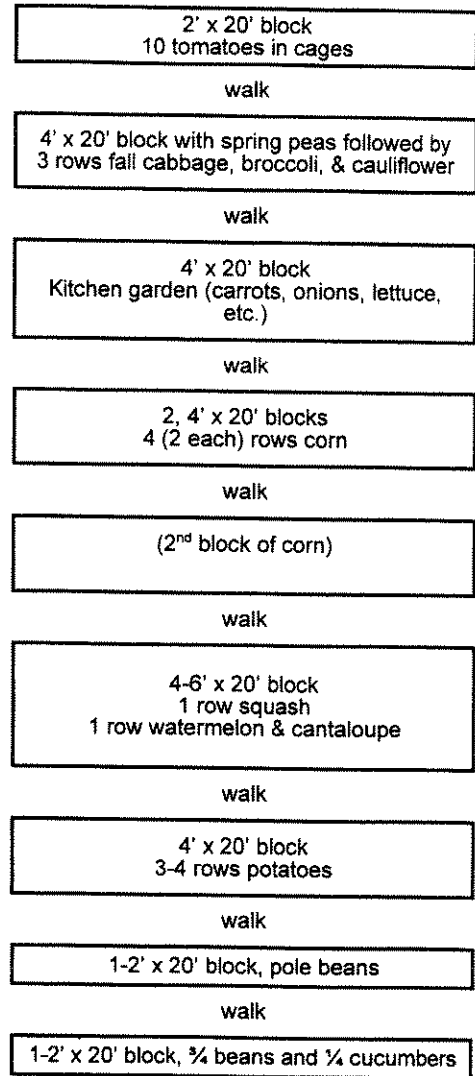


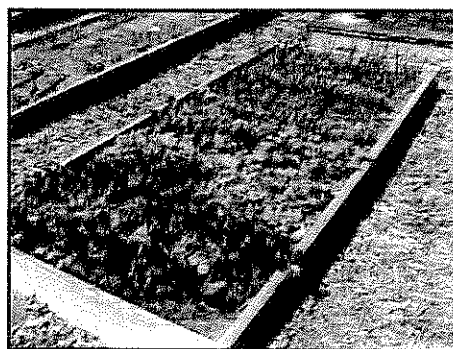
Figure 4. Sample block-style garden

**Trellis tomatoes and cucumbers** to save space and make harvest easier.

The increased air circulation around trellised tomatoes helps suppress tomato blight. Space trellised tomatoes a minimum of 24 inches apart down a single row, in a block two to three feet wide. Plant cucumbers along a trellis at 9-12 inch spacings.

**Beans and peas** may be easier to pick and are less disease-prone if planted in single or double rows, rather than block style planting. Space beans 12" between rows and 4four inches between plants. Plant a double row down a block two to three feet wide.

Figure 5. Raised bed garden with chard, lettuce varieties, spinach, beets, and onions. Because even water distribution is needed for this bed with a heavy plant population, the drip irrigation hose is run up and down the bed four times on a 12" spacing. The bed will be mulched with dry grass clippings to conserve water and control weeds in summer. Wood chips make an excellent mulching material between beds.



#### **Additional Information** – *CMG GardenNotes* on vegetable gardening:

- |      |   |      |   |
|------|---|------|---|
| #711 | Vegetable Garden: Soil Management and Fertilization | #718 | Early Blight of Tomatoes                          |
| #712 | Sample Vegetable Garden Seed Catalogs               | #719 | Vegetable Garden Hints                            |
| #713 | Block Style Layout in Raised Bed Vegetable Gardens  | #720 | Vegetable Planting Guide                          |
| #714 | Irrigating the Vegetable Garden                     | #721 | Sample Planting for Raised-Bed Garden             |
| #715 | Mulches for the Vegetable Garden                    | #722 | Frost Protection and Extending the Growing Season |
| #716 | Water Conservation in the Vegetable Garden          | #723 | Growing Vegetables in a Hobby Greenhouse          |
| #717 | Growing Tomatoes                                    | #724 | Vegetable Gardening in Containers                 |

---

**Authors:** David Whiting, Carol O'Meara and Carl Wilson: Colorado State University Extension

- o Colorado Master Gardener *GardenNotes* are available on-line at [www.cmg.colostate.edu](http://www.cmg.colostate.edu).
- o Colorado Master Gardener training is made possible, in part, by a grant from the *Colorado Garden Show, Inc.*
- o Colorado State University, U.S. Department of Agriculture and Colorado counties cooperating.
- o Extension programs are available to all without discrimination.
- o No endorsement of products mentioned is intended nor is criticism implied of products not mentioned.
- o Copyright 2003-2006. Colorado State University Extension. All Rights Reserved. *CMG GardenNotes* may be reproduced, without change or additions, for non-profit educational use.



Revised September 2008

**Extension**

# SILVANA'S COMMUNITY GARDENS

... columbines, carrots & community growing together

## 2009 Garden Classes

To Register Call Joanna, Garden Education Chair at 970-668-2077

Suggested Donation for classes is \$3 unless otherwise indicated. Proceeds support Silvana's Community Garden

SILVANA'S COMMUNITY GARDENS INVITES INDIVIDUALS AND FAMILIES FROM ALL BACKGROUNDS WHO CHOOSE TO GROW TOGETHER. THIS WORKING GARDEN WELCOMES ALL MEMBERS OF THE COMMUNITY REGARDLESS OF GARDENING EXPERIENCE THROUGH HANDS-ON DEVELOPMENT THE GARDENS INTEGRATE EDUCATION, CREATIVE EXPRESSION, COOPERATION AND COMMUNITY SPIRIT



### April Edibles that Grow in Summit County & How to Choose Your Seeds

29

Knowing what edible crops can grow in this elevation is important. Learn about growing in high altitude and confined area gardening with Kim Desmoineaux, Master Gardener. 7-8:15pm, Silverthorne Library Blue River Meeting Room. Registration Required

### June

#### How to Grow a "Green" Garden - Pest Control

Silvana's garden treats its land in a holistic manner and doesn't allow the use of pesticides. Learn the natural ways for controlling pests with Kim Desmoineaux, Master Gardener. 7-8:15pm, Silverthorne Library Blue River Meeting Room. Registration Required

15

#### Eating Locally in the Rockies

Meet Local Farmers, Find out which foods are grown in our region and how to get them. High Country Conservation Center. 5:30-7:30pm, 518 E. Main Street, Frisco. Registration required.

20 & 27

#### Preparing & Cooking Garden Veggies & Herbs (Two-Part Series)

Come join the fun and discover a new favorite recipe to make tonight using the produce in your own personal garden! 11-12, meeting in Rainbow Park, covered pavilion. Registration Required

2

#### Introduction to Permaculture and Forest Gardening

Join Jerome Ostenowski of the Central Rocky Mountain Permaculture Institute (CRMPI) for a hands on introduction to the principles and techniques of permaculture and forest gardening. We will learn how to cultivate an ecologically rich, self maintaining garden by planting in a way that mimics a natural forest with a diverse, multi-story system producing fruit, flowers, vegetables, and medicinal herbs. Noon- 5pm, Silvana's Community Garden Sponsored by the Summit Prevention Alliance and CRMPI, Suggested Donation: \$15-50 Registration Required

18 & 25,

#### Master Mountain Composter Three-Part Series

Compost Fundamentals, Composting at High Altitude in Cold Weather & How to be a Worm Farmer: Vermiculture. 5-8pm High Country Conservation office, 518 E. Main Street cabin in Frisco, Registration required. Please call 668-5703.

Visit [www.highcountryconservation.org](http://www.highcountryconservation.org)

24

#### Noxious Weeds

Join Lisa, director of Summit County's Weed Department, for a lesson all about how to control noxious weeds in Summit County. 12-1, Meeting @ Silvana's Community Garden. Registration required.

### September 9

Extending Summit County's Growing Season: Planting for Fall & Winter Learn various ways to extend the growing season. 6:00-7:15, Silverthorne Library Blue River Meeting Room. Registration Required

### May

20

#### Organic Gardening in High Altitudes

Learn about the best flowers and plants for Summit County from folks who know. Take home secrets for successful vegetable gardening in our short growing season. 5:30-7:30pm, Silverthorne Library Blue River Meeting Room. Sponsored by the High Country Conservation Center: [www.highcountryconservation.org](http://www.highcountryconservation.org) Registration required. Call 668-5703. Suggested Donation: \$10 (proceeds benefit HCCC)

### July- August

Thursdays, July 16, 23, 30 & August 6 & 13

#### Silvana's Children's Garden Starting From Seed

Children learn to plan, plant, and care for a vegetable garden starting from seed with Phyllis Raynor, Master Gardener 5:30-6:30pm. Silvana's Community Garden. Free. Registration required. Call 970-668-2077.

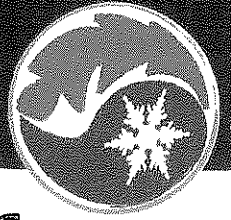
Wednesdays

July 15, 22 (NO 7/29)




Aug 5, 12, 19

#### Silvana's Children's Garden-enseñada en Español por Jannine Walldan, ND, LAC

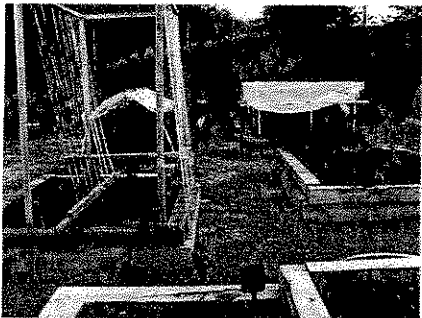
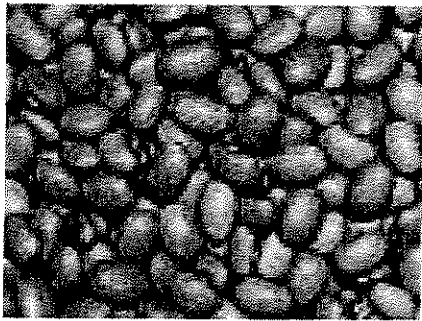
Niños de edades 6 y mas van a aprender la jardinería en la alta altitud y cómo pueden usar esta comida para mantener su salud. Los miércoles, 12:15-1:15, Julio 15 y 22 Los clases serán en Silvana's Community Garden, en Silverthorne. Llama 668-2077.



# 2009 Green Living Workshops

<p><b>January</b></p> <p><b>28</b> Renewable Energy: Find out about local programs &amp; rebates for energy efficiency &amp; renewable energy applications. Free; 6-8pm at the Frisco Community Center (3rd &amp; Granite)</p>	<p><b>March</b></p> <p><b>6</b> The 20th Annual Tim McClure Benefit</p> <p><b>18</b> Intro to Green Cleaning: Learn easy ways to keep your house toxic-free using simple, affordable ingredients.</p>	<p><b>April</b></p> <p><b>20-24</b> EARTH WEEK: A week-long series of discussions with topics on reducing your carbon footprint, recycling, energy, veggie oil, &amp; more.</p> <p><b>25</b> Earth Day Action Fair: Join local green businesses, nonprofit groups, &amp; citizens in celebration of Earth Day. Free, 10am-2pm</p>	<p><b>May</b></p> <p><b>20</b> Organic Gardening: Learn about the best flowers &amp; plants for Summit County. Find out the secrets for extending our short growing season.</p> 
<p><b>June</b></p> <p><b>17</b> Backyard Brew-Ha-Ha: Learn how to brew your own sustainable beer (or rootbeer) from Colorado homebrew experts.</p> <p><b>18</b> Master Mountain Composter (MMC) Class 1: Fundamentals, pile building, methods, &amp; use. \$20 Drop-In Fee, Thursdays from 5pm-8pm</p> <p><b>25</b> MMC Class 2: High altitude, cold weather composting; the landfill environment; &amp; composting science. \$20 Drop-In Fee, 5pm-8pm</p>		<p><b>July</b></p> <p><b>9</b> MMC Class 3: How to be a Worm Farmer - Basic &amp; Advanced Vermicomposting. \$10 Drop-In Fee, 5pm-8pm</p> <p><b>11</b> Ask a Master Mountain Composter: Drop by the MMC booth for compost info &amp; supplies. Free, 12pm-2pm</p> <p><b>11</b> Backyard Composting 101: Learn the basics of backyard composting to reduce your food waste at home! Saturday workshop, 2pm-4pm</p> <p><b>15</b> Eating Local in the Rockies: Meet local farmers, find out which foods are grown in our region &amp; how to get them.</p>	
<p><b>August</b></p> <p><b>19</b> Greener Kitchens through Canning &amp; Preserving: Learn how to preserve some of your summer fruits and veggies for the winter. Get the best methods for healthy food storage.</p>	<p><b>September</b></p> <p><b>16</b> Vermicomposting &amp; Compost Tea: Compost food scraps year-round with the help of worms. Come start your own farm! </p> <p><b>17</b> Grow Your Own Food with Hydroponics: Learn to grow your own veggies indoors with the right system. Thursday workshop.</p>	<p><b>October</b></p> <p><b>10</b> Fall Energy Fair &amp; Sustainable Homes Tour</p> <p><b>21</b> Home Energy Solutions Workshop: Find out simple, energy efficient solutions to help you save money this winter.</p>	<p><b>November</b></p> <p><b>21</b> Recycle Forum and MRF Tour: Bring your recycling questions &amp; get the dirty details on Summit County's waste stream. Free Saturday workshop, 1pm-3pm.</p> 

High Country Conservation Center's 2009 Green Living Workshops are comprehensive, hands-on opportunities to learn about a variety of topics. Unless otherwise noted - all Workshops are Wednesdays at HC3's office at 518 E. Main Street, from 5:30pm to 7:30pm, and cost \$10. Pre-registration is suggested but not required. You can visit [www.highcountryconservation.org](http://www.highcountryconservation.org) for information about our workshops and events (highlighted in green on this calendar). Please feel free to contact HC3 at 668-5703 or email [info@highcountryconservation.org](mailto:info@highcountryconservation.org) for more information or to sign up for a workshop.



## The Harvest Center Resource List

### Books

- How to Grow More Vegetables and Fruits (and Fruits, Nuts, Berries, Grains, and Other Crops) Than You Ever Thought Possible on Less Land Than You Can Imagine by John Jeavons (Paperback - Oct 31, 2006)
- Seed to Seed: Seed Saving and Growing Techniques for Vegetable Gardeners by Suzanne Ashworth and Kent Whealy (Paperback - Mar 1, 2002)
- Food Not Lawns: How to Turn Your Yard into a Garden And Your Neighborhood into a Community by Heather Coburn Flores (Paperback - Oct 1, 2006)
- Hobby Farm: Living Your Rural Dream for Pleasure and Profit by Carol Ekarius (Paperback - Jun 25, 2005)
- The Winter Harvest Handbook: Year Round Vegetable Production Using Deep Organic Techniques and Unheated Greenhouses by Eliot Coleman (Paperback - April 15, 2009)

### Seeds

- Abbo-Regional Organic Seeds. Colorado grown at Abbondanza Farm. website [www.eatabbo.org](http://www.eatabbo.org)
- Johnny's Selected Seeds is a well respected source. website [www.johnnysseeds.com](http://www.johnnysseeds.com)
- Seeds of Change began in 1989 with a simple mission: to preserve biodiversity and promote sustainable, organic agriculture. website [www.seedsofchange.com](http://www.seedsofchange.com)
- Seed Savers Exchange members have passed on approximately one million samples of rare garden seeds to other gardeners since 1979. buy seeds at [www.seedsavers.org](http://www.seedsavers.org)
- Territorial Seeds celebrates their 30th anniversary with an excellent selection. website [www.territorialseed.com](http://www.territorialseed.com)

### Soil and Gardening Supplies

- Outpost Plumbing Feed & Ranch Supply, 18129 County Rd 1, Florissant, CO 80816 offers the organic gardener a one stop source for seeds, soil, and fertilizer . Call (719) 748-5039 for more information.
- Ute Pass Sand & Gravel 20575 E US Highway 24 Woodland Park, CO 80863 offers incredible topsoil, rocks and gravel that will help you get growing. Call (719) 687-3111 for more information.

### Web Sites

- Pikes Peak Urban Gardening seek to cultivate community through organic gardening and sustainable urban farm projects in the Pikes Peak region. We are pleased to be very close friends. Visit their website at [www.ppugardens.org](http://www.ppugardens.org)
- Dave's Garden articles and videos show you how to start seeds and learn how to have your best garden ever. website [www.davesgarden.com](http://www.davesgarden.com)
- Organic Seed Alliance supports the ethical development & stewardship of seed. website [www.organicseedalliance.org](http://www.organicseedalliance.org)
- School gardens are a powerful tool for promoting science education, engaging students in healthy behaviors, and fostering a connection to nature. website [www.efn.org/~sgp/index.html](http://www.efn.org/~sgp/index.html)
- The Harvest Center - promoting healthy, sustainable lifestyles. [www.wpharvestcenter.org](http://www.wpharvestcenter.org)

The Harvest Center  
Email: [info@wpharvestcenter.org](mailto:info@wpharvestcenter.org)



## Sponsors of Silvana's Community Gardens

Town of Silverthorne

Neils Lunceford

Baker # Hogan # Houx

Vista Auto Group

Summit Prevention Alliance

Big Horn Lumber

Soul of the Summit/Summit Foundation

Summit Rotary

Summit Prevention Alliance

LiveWell Colorado

Specialty wood Products

Campbell Construction & Engineering

Dave Anderson

Strategic Fence

Sanders True Value

George Shaffer Constructions

Alpine Gardens